

# ESTATE PLANNING AFTER A CANCER DIAGNOSIS

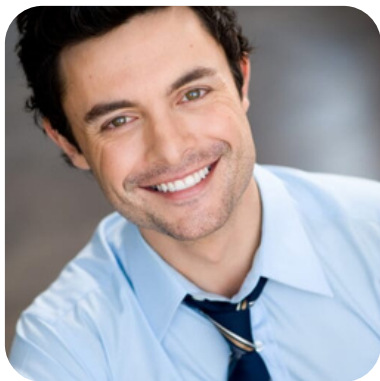
LIVE WEBINAR FOR LEGAL PROFESSIONALS

**REGISTER:**

[tinyurl.com/CLRCestateplanning](https://tinyurl.com/CLRCestateplanning)



WEDNESDAY, JULY 19 • 1 P.M. PT



The Cancer Legal Resource Center Professional Panel welcomes attorney and popular speaker Mark Gilfix, Esq., of Gilfix & La Poll Associates for this complimentary webinar designed to empower people diagnosed with cancer ensure that their wishes are clearly expressed – and their loved ones protected. The CLRC intends to seek California MCLE credit for this webinar.